

# MOUNTAINS, PLAINS AND SEAS

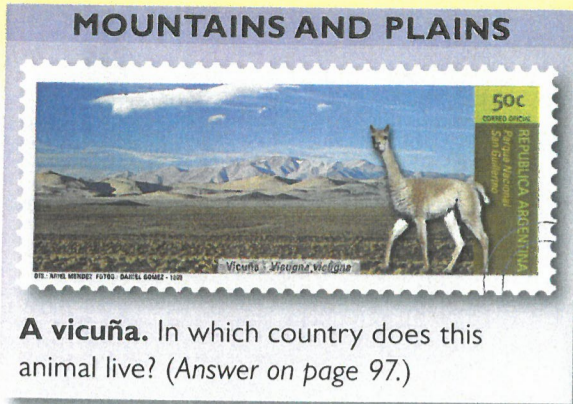
**T**HE map shows that there is much more sea than land in the world. Over two-thirds of the Earth's surface is covered with water or ice. The Pacific is by far the biggest ocean; the map splits it in two.

The mountains are shown with shadows on this map. Look for the world's highest mountain range – the Himalayas, in Asia. There are high mountains on the western side of both American continents. Most of the world's great mountain ranges have been made by folding in the Earth's crust.

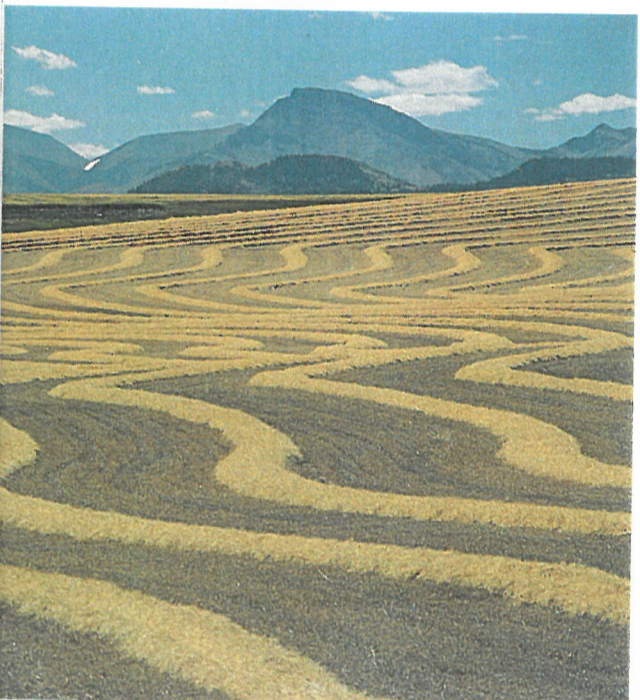
The green expanse across northern Europe and northern Asia is the world's biggest plain.



▲ **The Atlantic Ocean** washes the desert shore of Namibia, in southern Africa.



**A vicuña.** In which country does this animal live? (Answer on page 97.)



▲ **Farming the Great Plains of North America.** The Plains cover large areas of the USA and Canada. This land in Alberta, Canada, has just been harvested. The almost flat land of the Great Plains ends where the Rocky Mountains begin.



To see all of Antarctica turn to page 89.